



Telopea Park

Unit 2 / 14 Currie Crescent  
Kingston ACT

Community  
Gardens

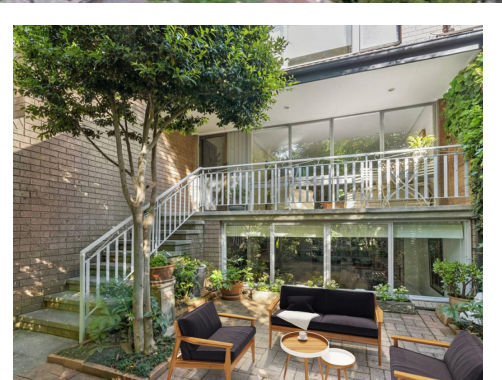
Light-filled Executive Townhouse!

2/14 Currie Crescent, Kingston

3 2 2

'Currie Crescent', in the tightly held Telopea Park precinct, offers all the convenience of inner-south living, blended seamlessly with relaxed lifestyle opportunities afforded to you by the abundant parkland, recreational activities, lakeside walking and cycling trails and proximity to the Parliamentary Triangle. The Kingston Organic Community Garden also lies at your doorstep.

The tri-level design of this unique home offers flexibility, style and convenience. Secure parking is complemented by an enormous basement/library/office space on the lower level, kitchen and living spaces on the ground floor and bedroom accommodation upstairs. The home is punctuated by natural light and quality fixtures abound, as well as clever additions throughout which integrate design, practicality and liveab...



Trying to access www.maloney.com.au on a mobile device

**Moira Maloney**

mobile 0407 715 244

[mmaloney@maloneys.com.au](mailto:mmaloney@maloneys.com.au)

